



## AIR HUMIDIFIER IBL HU450 RB

### Instructions Manual

Please note that no more NOTICE while product upgrade and specification are updated. The appearance of the actual product may be slightly different from the photos of packages. Please subject to the product.



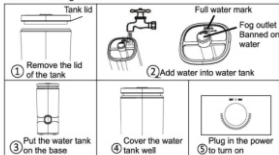
## Working Principle of Products

The principle of Ultrasonic air humidifier is using ultrasonic 1.7 million high frequency oscillations per second to atomize water into ultrafine particles in 1-5 micron. Through the pneumatic device, The mist are diffused into the air, so that humidify the air uniform as purpose.

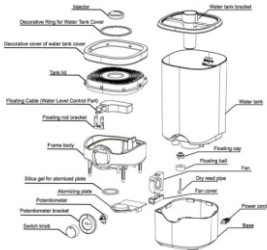
## Product Usage Method

1. Place put the machine on a horizontal table, pick up the water tank after removing the tank lid, and inject proper amount of clean tap water or distilled water (the power plug must be pulled out when water is adding) and add water to the highest water level that marked on the inside of the water tank.
2. Place the water tank on the base steadily, cover the water tank and then connect the power plug to the socket. Make sure that the working voltage of the machine is in accordance with power supply before use the machine.
3. Turn on the power switch/fog adjustment button, the power indicator lights on (green or blue), the machine starts to work, and can adjust the volume of fog at will;
4. When the water level of the machine is low, the machine will cut off the power supply automatically.it will stop working and the water shortage indicator lights will on (red). Please turn off the power switch first, pull out the power plug and add water to the water tank.

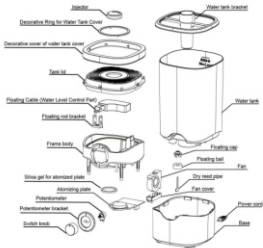
## Humidifier Using Guide



## Product components name



**Mechanical Version**



**Smart Version**

## Product Information

|                     |                                    |  |
|---------------------|------------------------------------|--|
| Product name        | Air Humidifier                     |  |
| Model No            | IBL HU450 RB                       |  |
| Control Mode        | Mechanical Version / Smart Version |  |
| Rated voltage       | 220V                               |  |
| Rated frequency     | 50Hz                               |  |
| Rated power         | 28W                                |  |
| Tank capacity       | 4.5L                               |  |
| Maximum atomization | 250 mL/h                           |  |
| Product size(L*W*H) | 180x160x370mm                      |  |

## Fault analysis and troubleshooting

| Fault analysis                    | Cause analysis   | Repair method  |
|-----------------------------------|--|--|
| No light, no wind and no fog?     | Power is not connected or problems occur                   | Connect the power plug to the socket again, if do not work, please contact the after-sales service center in time. |
| Light on, but no wind and no fog? | Base water level is too high                               | Pour some water out of the base and restart it.  |
| Less spray                        | Mist disc with more scale or excessive impurities in water | Clean mist disc or replaces clean water.   |
| Water can't reach the base.       | The tank lid is dirty or the tank is not in correct place. | Clean the water tank cover and install the water tank correctly.   |
|                                   | The water in the tank exceeds the maximum water level.     | Reduce the water in the tank to no higher than the highest water level.  |

## Operation instructions for smart panel



POWER



HUMID



TIME



SLEEP



MIST

### 1. POWER

Connect the plug and touch the POWER key, LCD screen lights up the machine start working. touch the Power key again, it stops working and keep in standby state.

### 2. HUMID

Humidity function start by pressing this key and the "HUMID" flickers on the LCD screen; the default humidity is 45%, then increases by 5% until 90% and log out humidity function, auto adjusting circularly till it same as ambient humidity. the machine will stop working.

### 3. TIME

Timer setting fuction. It can automatically shut down and enter standby state at fixed time for 1/2/4/8 hours, LCD screen will show the timing.

### 4. SLEEP

Pressing the key under working state, intelligent humidity 65%, screen "HUMID" icon to flicker for 5s, then auto shuts down the screen and keeps the original gear working. After the function is started, press any keys to light up the screen and the current working state. press this key again and exit this function; if no operation in 5s, the screen will close again.

### 5. MIST

The Mist is divide to 3 gears. low/medium/high mist can adjust by user. the default of startup is high mist.

### **Safety instructions**

1. Please don't pull the plug with wet hand to avoid the danger of electric shock.
2. Do not disassemble, repair or alter this product without authorization;
3. Do not touch the mist disc with your hand when the machine is working, otherwise it will make you feel pain.
4. The power cord neither be scratched, damaged or knotted, nor be pressed on heavy objects or clamped or processed, otherwise it may cause electric shock, short circuit or fire.
5. Do not replace the power cord without authorization. If there is any abnormal phenomenon, please pull out the plug immediately and contact the manufacturer or after-sales customer service.
6. If the soft wire of the power supply is damaged, as avoiding danger, it must be replaced by professional manufacturer, its maintenance department or similar departments.
7. Don't separate the water tank from the base while working. Don't touch the water and parts in the base.
8. This machine is only for indoor use.
9. When thunderstorm weather or long-terms non-use, please pull out the power plug;
10. Do not turn over the electrical appliances while working and the water in base,avoid burning the internal electronic components.
11. Keep the product away from children. Do not allow children to use or operate the product that avoid accidents occurred.
12. Pull out the power plug when filling water and cleaning.

### **Reminder**

Regarding water accumulation on the base:

The humidifier uses ultrasonic mist disc vibration to disperse liquid water into water mist. The water tank is only a transitional water storage tool. All the base flumes of the humidifier will accumulate water. Please feel free to use it.

Regarding fog regulation:

If there is water around the machine during use, it means that the room of humidity is too high, please adjust the fog volum appropriately.

### **Matters needing attention**

- 1) The power supply voltage must be consistent with the rated voltage of the product. If the supply voltage does not match, please contact the distributor and do not use the product.
- 2) When receiving the humidifier, please put it at room temperature for 30 minutes before using it, in order to prevent the water tank from being damaged due to sudden temperature change.
- 3) Please use it at normal room temperature (5 C ~ 40 C).
- 4) Place it in a flat position to avoid tilting.
- 5) Do not put the humidifier directly on the wooden floor that avoid the wooden floor was damaged by damp deformation.
- 6) Please place the humidifier 2 meters away from furniture and electrical appliances to avoid dampness.
- 7) Keep away from heat sources to avoid direct sunlight.
- 8) Never add hot water above 40 C into the water tank or sink, avoid damaging the machine.
- 9) Never let water flow into the body from the outlet. If there is water in the body, please wipe it with a dry cloth that avoid damaging the machine.
- 10) When the room temperature is below 0 C, please pour out the water in the water tank and sink that avoid the damage of the machine caused by ice.
- 11) Please do not put metal products, chemicals and detergents into the sink, otherwise will effect the mist diffused correctly.
- 12) Turn off the power supply and pull out the plug when pour water out of the sink.
- 13) If the humidifier wants to move, clean and add water, first must be turn off the power supply and pull out the power plug. Do not move the machine while working.
- 14) Forbidden to add water into the fog outlet and the air outlet.
- 15) When cleaning, please avoid the water flow into internal electrical appliances;

### **Cleaning and maintenance**

1. Clean the water tank, water tank and mist disc every week. Pull out the power plug before cleaning.
2. External cleaning of humidifier: wipe the surface with a clean soft wet cloth below 40 C.



3. Do not use hard objects when cleaning to avoid damage to parts.
4. Do not use chemical detergents for cleaning.
5. Always replace the old water in the water tank to keep the humidifier clean.
6. Keep the humidifier dry when do not use at a long time.

### Scale Removal Method for Transducer and Frame

1. Be sure to turn off the power supply and pull out it before cleaning.
2. Pour the descaling agent into the machine base, then add warm water about 60 degrees to dissolve all the descaling agent and soak for 5-10 minutes.
3. Then brush the transducer surface with a clean brush until the scale is removed.
4. At the same time, wash the machine seat and the surface of the transducer with clean water.

### Hazardous Substances Content Table in Products

| Names and contents of toxic and harmful substances or elements in products   |  |  |      |            |        |        |  |
|--|--|---|------|------------|--------|--------|--|
| According to the Regulations of the People's Republic of China on the Restriction of the Use of Hazardous Substances in Electrical and Electronic Products, the company lists the harmful substances and their contents in the parts and components of products. |  |   |      |            |        |        |  |
| Part name  | Toxic and harmful substances or elements |   |      |            |        |        |  |
|  | (Pb)                                     | (Cd)  | (Hg) | (Cr+ (VI)) | (PBBs) | (PBBS) |  |
| Shell/ink/parts  | ○  | ○   | ○    | ○          | ○      | ○      |  |
| fan  | x  | ○   | ○    | ○          | x      | x      |  |
| Power line assembly  | x  | ○   | ○    | ○          | ○      | ○      |  |
| Drive fan/Component  | x  | ○   | ○    | x          | ○      | ○      |  |
| Hardware, Insulator  | ○  | ○   | ○    | x          | ○      | ○      |  |
| Storage parts  | ○  | ○   | ○    | ○          | ○      | ○      |  |
| Internal conductor   | ○  | ○   | ○    | ○          | ○      | ○      |  |

This form is compiled in accordance with SJ/T11364.

○ : Indicates that the content of the harmful substance in all homogeneous materials of the component is below the limit specified in GB 2657.  
 x : : Indicates that the content of the harmful substance in at least one homogeneous material of the part exceeds the limit stipulated in GB 2657.

1. The machine is in normal use and has a one-year warranty on quality problems since the date of purchase (whichever is the invoice date).
  2. The following circumstances do not fall within the scope of free warranty, but still enjoy preferential maintenance services at the cost of materials only.
    - Failure to follow the instructions and precautions to cause product failure;
    - Faults of products caused by unexpected disasters, force majeure and other factors, such as high voltage, fire, flood, earthquake, etc.
    - Over the warranty period.
    - Customers make unauthorized changes, misuse or accidental damage.
    - The use environment not suit for the specifications of the products.
  3. Please keep the warranty card properly and do not reissue it after it is lost.
  4. Please note that no more NOTICE while Product upgrade and specification are updated. The appearance of the actual product may be slightly different from the photos of packages. Please subject to the actual product.
-