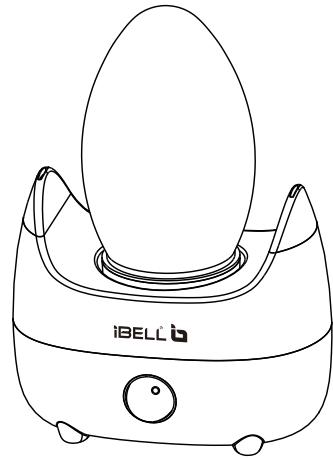




# AIR HUMIDIFIER

## User Manual

### IBL HU8501L



Thank you for purchasing our air humidifier, please read this instruction carefully before use, please keep this booklet for future reference.

※The pictures are for reference only

## Product introduction

Ultrasonic technology is a relatively mature technology in the world, it is widely used in various fields, ultrasonic humidifier adopts ultrasonic high frequency oscillation principle, the water is atomized into 1-5 micron ultrafine particles, the water mist is diffused into the air through the pneumatic device, so as to achieve the purpose of uniform humidify the air, fresh air, moisten skin, improve health.

## Product accessories list

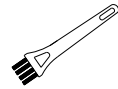
Open the packing carton, please check the carton contains the following accessories



Product: 1pc



Manual: 1pc



Brush: 1pc

## Specification

Model	IBL HU8501L
Voltage	AC220V/50Hz
Wattage	25W
Noise Level	≤35dB (A)
Capacity	1.5L
Atomization time	Max mist: 10H
Mist output	100-200mL/H
Net weight	
Gross weight	
Product size	208x146x300M
Packing size	216x152x330mm
Executive standard	GB4706. 1-2005 GB4706. 48-2009

## Main Features

- Big water filling mouth, easy for filling water;
- Water shortage protection;
- LED water shortage indication;
- Spray for up to 10 hours.

## Safety precautions

In order to ensure safe use, avoid causing you and others to receive injury and property loss, please observe the following safety precautions.

- ⚠ **Warning:** Indicates the possibility of serious accident or injury.;
- ⚠ **Attention:** Indicates possible product damage.;

The following conditions are not considered in this product:

- The use of appliances by unattended children and persons with disabilities;
- The product can not be play by children as a toy;
- This product is not suitable for people with physical or mental disabilities and lack of necessary experience and knowledge, unless used under the supervision of someone responsible for its security.

## ⚠ Warning



Forbidden to disassemble

Non-professional personnel, do not dismantle the machine, so as to avoid electric shock accident!

Do not place the product around a stove or other heat radiation source or inflammable or explosive materials to avoid accidents;

Please do not use wet hands to plug in or out the power to avoid electric shock.

When the machine is turned on, please do not touch the atomizer sheet and PTC heating film with hand to avoid hurting;



Prohibition

The power line must not be scratched, damaged, excessively bent, pulled, twisted, knotted, and do not press heavy objects on it or clamped or processed to avoid the risk of electric shock;

Please do not put metal products, chemicals, detergent into the water tank, otherwise there will be poor atomization problem.

This product is for indoor use only, keep out of reach of children.

## ⚠ Attention



Prohibition

Please confirm whether the voltage in this city conforms to the specification of the product before use.;

The product will produce moisture when working, please keep away from other household electrical appliances.

Do not place the product where it is exposed to strong light or hot air.;

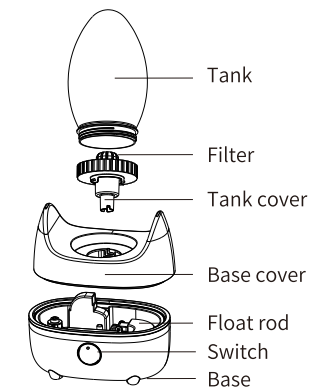
When not in use for a long time, please cut off the power and unplug the power.

When pouring water into the tank, do not exceed the highest water level to prevent water overflow into the body.

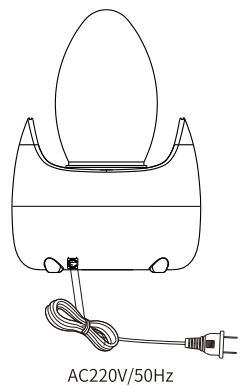
Do not use hard object to knock the surface of the humidifier to prevent the shell from cracking.

## Parts

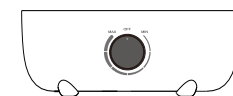
### Main engine explosion diagram



### Back of product



### Panel function

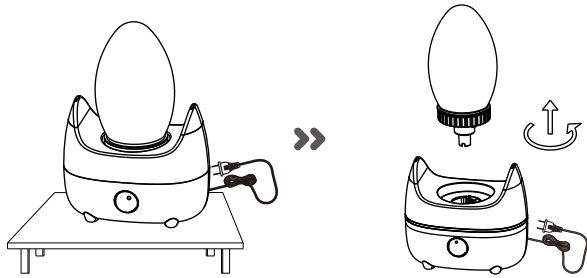


MAX	The maximum amount of mist
MIN	The minimum amount of mist
OFF	Switch/adjustment of mist
Blue LED light	operation mode
Red LED light	water shortage

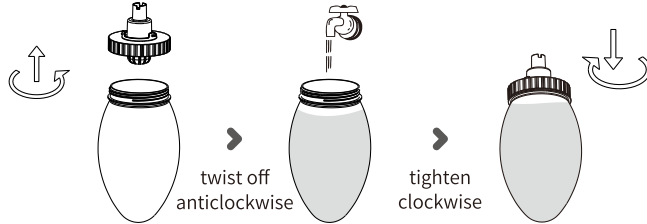
## Steps for usage

### Steps for filling water

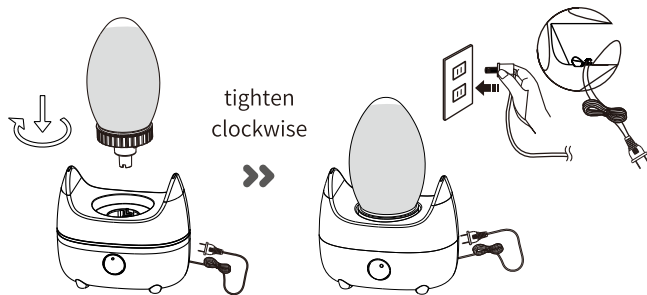
- ① The humidifier should be placed on a flat surface.
- ② Twist off the tank anti-clockwise, and lift up the tank.



- ③ Stand upside down the tank, twist off the tank cover anti-clockwise, fill in water, tighten the cover clockwise.



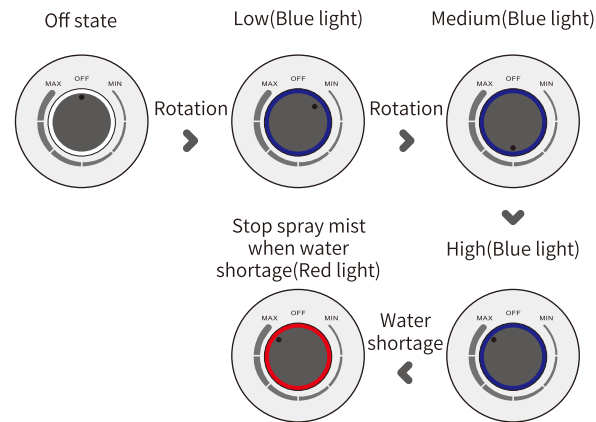
- ④ Install the full water loaded tank on the base, turn clockwise to fasten. Plug in and turn on the knob switch to enjoy the mist.



## Steps for usage

### Steps of operation

After the machine is plugged in, turn the fog switch clockwise, red indicator light will lighten, when the water is added to the water level switch, the blue light is on and the machine goes into spray mode, when spraying, the amount of mist can be adjusted by adjusting the switch.

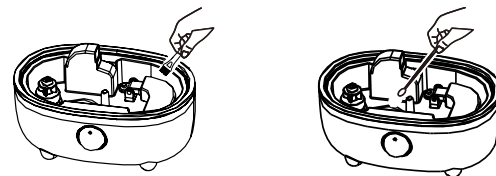


### Cleaning and maintenance

After appliance is used for a period of time, scale will appear, form "white powder" phenomenon; it is attached to the surface of the transducer, affecting the humidification effect. It is necessary to clean the main components of humidifier regularly.

- ① Add proper amount of water, clean the machine with a clean water with cleaning brush.
- ② Wipe the atomizer with a cotton swab stuck with citric acid solution.

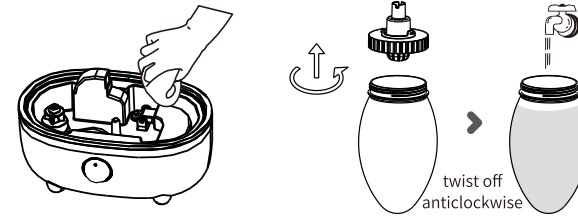
- Attention**
- Please do not use a sharp hard device to touch or concussion the atomizer sheet.
  - Do not use detergent to clean, use clean water is better;



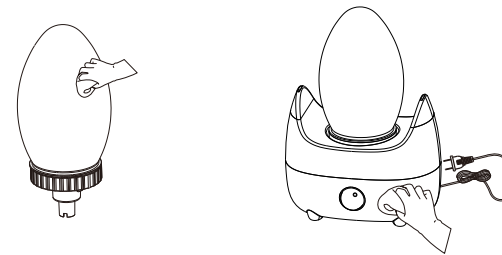
## Steps for usage

### Cleaning and maintenance

- ③ Rinse with water and wipe clean with a soft cloth
- ④ Twist off the tank cover, rinse the tank by water.



- ⑤ Dry with a soft cloth after rinsing the tank.
- ⑥ The shell can be wiped with a wet cloth, and then wipe dry with a clean cloth

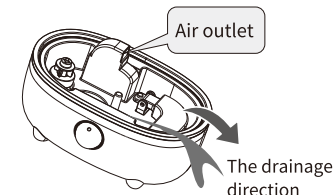


- Do not use a cloth with chemical solvent, gasoline, kerosene or polishing powder to wipe the surface.
- When cleaning, don't let water get into the inside body to avoid internal component being wet and malfunction.

### Instruction of pouring water



- Do not pour water from the direction of the outlet position



## Troubleshooting

If your humidifier does not work properly, please check the following before requesting after-sales service.

Fault phenomenon	Cause Analysis	Method of exclusion
The switch indicator is not on	The power plug is not plugged in	Plug in the power cord and turn on the power
There is water in the tank, the display is lit, but the indication is always indicated by the water shortage.	There is too much scale on the atomizer sheet	Clean scale on atomizer
Abnormal mist	1. Too much scale on the atomizer sheet; 2. Water is dirty or water is stored for a long time 3. The mist output set to the minimum gear position;	1. Cleaning the atomizer sheet; 2. Replace clean water; 3. Rotate the switch to adjust the mist mode
Abnormal noise	1. Less water in the atomizing sink; 2. Resonate with the desktop	1. Adding water 2. Placed on a firm and stable desk
The mist leak out from the tank cover	The tank is not in place.	Re-install the tank
The sprayed mist has an odor	Water is not clean and it has been left for too long.	Clean the sink, dry it, and replace it with clean water.