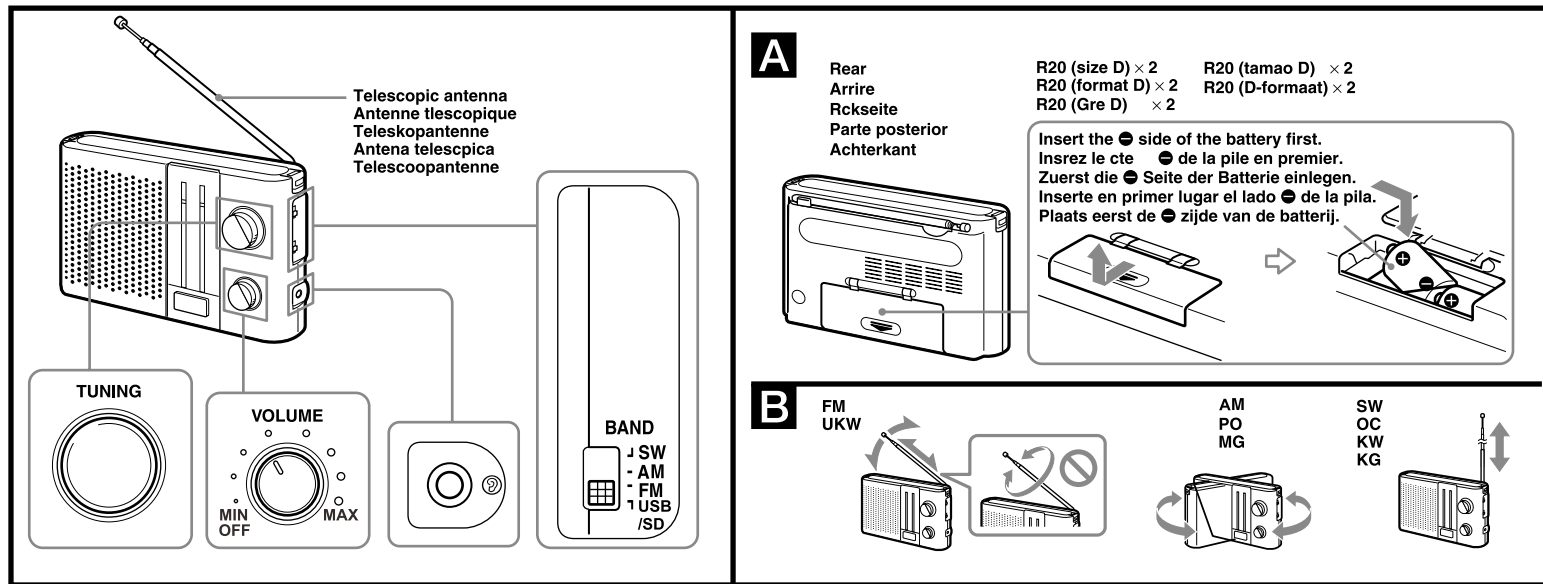


FM/SW/MW 3 Band Radio

Operating Instructions



Features

- Long battery life with two R20 (size D) batteries
- High power radio
- Easy to carry with the supplied carrying strap

Installing the batteries

(See fig. A)

- 1 Open the battery compartment lid.
- 2 Install two R20 (size D) batteries (not supplied) with correct polarity.
- 3 Close the lid.

Battery life (Approx. hours)		(JEITA*)		
When using	FM	SW	AM	
Sony R20 (size D)	200	220	220	

* Measured by JEITA (Japan Electronics and Information Technology Industries Association) Standards. The actual battery life may vary depending on the circumstance of the unit.

When to replace the batteries

When the sound becomes weak or distorted, replace all the batteries with new ones.

Notes on batteries

- Do not charge the dry batteries.
- Do not carry the dry batteries with coins or other metallic objects. It can generate heat if the positive and negative terminals of the batteries are accidentally contacted by a metallic object.
- Do not use different types of batteries at the same time.

When you replace the batteries, replace all with new ones.

When you are not going to use the unit for a long time, remove the batteries to avoid damage from battery leakage and corrosion.

Operating the radio

- 1 Open the **VOLUME** switch
- 2 Select a desired band.
- 3 Tune in to a station using **TUNING**.
- 4 Adjust the volume using **VOLUME**.

To turn off the radio

Turn the VOLUME switch to OFF

To listen with an earphone

Connect the earphone (not supplied) to the Ⓜ (earphone) jack.
The speaker is deactivated when an earphone is connected.

Improving the reception

(See fig. B)

- FM:** Extend the telescopic antenna and adjust the angle for optimum reception. Rotate the unit horizontally for optimum reception. A ferrite bar antenna is built into the unit.
- AM:** Extend the telescopic antenna vertically.
- SW:** Extend the telescopic antenna vertically.

Note

Adjust the direction of the antenna by holding the bottom of it. The antenna can be damaged when you move the antenna with excessive force.

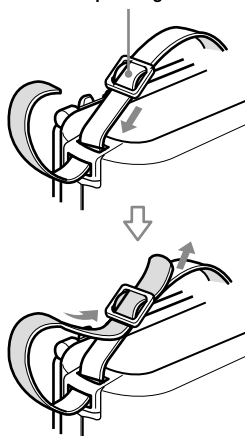


Attaching the supplied carrying strap

When you carry the unit, use the supplied carrying strap.

Pass the strap under the bar on each side of the unit.

Pass the strap through the buckle.



Precautions

Operate the unit only on 3 V DC with two R20 (size D) batteries.

The nameplate indicating operating voltage, etc. is located on the rear exterior.

Avoid exposure to temperature extremes, direct sunlight, moisture, sand, dust or mechanical shock. Never leave in a car parked under the sun.

Should anything fall into the unit, remove the batteries, and have the unit checked by qualified personnel before operating it any further.

In vehicles or buildings, radio reception may be difficult or noisy. Try listening near a window. Since a strong magnet is used for the speaker, keep personal credit cards using magnetic coding or spring-wound watches away from the unit to prevent them from possible damage caused by the magnet.

To clean the casing, use a soft cloth dampened with a mild detergent solution.



Disposal of Old Electrical & Electronic Equipment (Applicable in the European Union and other European countries with separate collection systems)

This symbol on the product or on its packaging indicates that this product shall not be treated as household waste. Instead it shall be handed over to the applicable collection point for the recycling of electrical and electronic equipment. By ensuring this product is disposed of correctly, you will help prevent potential negative consequences for the environment and human health, which could otherwise be caused by inappropriate waste handling of this product. The recycling of materials will help to conserve natural resources. For more detailed information about recycling of this product, please contact your local Civic Office, your household waste disposal service or the shop where you purchased the product.

If you have any questions or problems concerning your unit, please consult your nearest Sony dealer.

USB/SD USED

To Play Mp3 music by USB stick or SD card

- Insert **USB** stick or **SD** card in **USB/SD** slot and the player will play the song directly.

Press **PLAY/PAUSE** button to hold the playback, press it again to continue the playback.

Press **PREV** button to select the previous and **NEXT** button to the next song.

Specifications

Frequency range:

Band	
FM	88 -108 MHz
AM	530-1 600 kHz
SW	11.0-23.0 MHz

Speaker

Approx. 9.2 cm (3 5/8 inches) dia., 4 Ω

Output

Ⓜ (earphone) jack (3.5mm minijack)

Power output

300 mW (max)

Power requirements

3V DC, two R20 (size D) batteries

Dimensions

Approx. 216 × 129.8 × 68.6 mm (w/h/d)
(8 3/8 × 5 1/8 × 2 3/4 inches) incl. projecting parts and controls

Mass

Approx. 676 g (1 lb 8 oz) incl. carrying strap and batteries

Supplied accessories

carrying strap (1)

Design and specifications are subject to change without notice.