

iBELL[®]

INSTRUCTION MANUAL

MORE BRIGHT
MORE
POWER

Brighten your life



CREE LED



RECHARGEABLE LED FLASH LIGHT




Technology evolves at an amazing pace, surprising us with gadgets surpassing our imagination. To stay in sync with changing times and present customers with the latest innovations at affordable prices assert the competence of a company. iBell, the consumer durables brand from India, has earned the recognition and trust of millions of customers by presenting them with the newest in home appliances. The brand provides high quality, long-lasting products at favourable prices and effective after-service.

Unlike many other brands iBell has a wide variety of products under its label, ranging from electronics appliances to kitchenware. The brand is further diversifying its product lines in order to serve the overall requirements of a family.

Congratulations!!

On becoming a proud owner of **iBELL**  Sentinel Series Aircraft Aluminium Alloy Rechargeable Flashlight System, a remarkable handy flashlight. It is manufactured to the highest quality standards

and we hope that it will give you many years of trouble-free use.

Please read this manual before using your **iBELL**  Rechargeable Flashlight. It includes important operating and safety instructions.

As with any fine instrument, due care and maintenance of this product will provide years of dependable service.

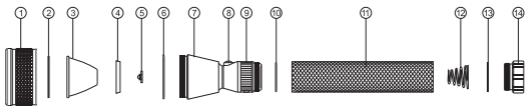
Specifications

Model Nr.	Length	Weight	Material	Lamps
IBL FL8325	153 mm	0.07 kg	Aircraft Aluminium	XPE LED
IBL FL8336	221 mm	0.08 kg	Aircraft Aluminium	XPE LED
IBL FL8348	225mm	0.15 kg	Aircraft Aluminium	XPE LED
IBL FL8359	261 mm	0.20 kg	Aircraft Aluminium	XPE LED
IBL FL8368	294 mm	0.22 kg	Aircraft Aluminium	XPE LED
IBL FL8379	325 mm	0.38 kg	Aircraft Aluminium	XPE LED
IBL FL8389	358mm	0.50 kg	Aircraft Aluminium	XPE LED

Specifications

Battery Type	Charging Time	Operating	Coverage
NI-CD 1.2V 800mAh	8 hours	35 minutes	350 m
NI-CD 2.4V 1600mAh	8 hours	80 minutes	650 m
NI-CD 2.4V 2000mAh	8 hours	120 minutes	1000 m
NI-CD 3.6V 2400mAh	8 hours	230 minutes	2000 m
NI-CD 3.6V 2700mAh	8 hours	275 minutes	3000 m
NI-CD 3.6V 3000mAh	8 hours	320 minutes	3500 m
NI-CD 4.8V 4000mAh	8 hours	415 minutes	3500 m

Specifications



1-Face Cap
2-Lenses
3-Light Cup

4-LED Fixture
5-LED
6-O-Ring

7-Head
8-Switch
9-charging

10-O-Ring
11-Barrel
12-Tail Cap Spring

13-O-Ring
14-Tail Cap

Safety Measures

- A. This manual contains important safety and operating instructions for operating your **iBELT b** and charger.
- B. **NEVER DEEP DISCHARGE NICKEL-CADMIUM BATTERIES.**
Read the instructions under care and use of Nickel Cadmium batteries in this manual.
- C. **CAUTION.** In order to reduce the risk of fire, electrical shock, or personal injury, **NEVER** attempt to use this charger with any other attachment of unit. Likewise, **DO NOT** attempt to charge the **iBELT b** with any other charger. **WARNING.** Do not keep your **iBELT b** with its face against any surface while in operation. The resultant heat build-up can cause a fire.
- D. **NEVER MISTREAT THE CORD.** Never carry charger by cord or pull it to disconnect the charger from a receptacle.
- E. **AVOID** the use of an extension cord. **CONNECT THE CHARGER DIRECTLY INTO AN ELECTRICAL OUTLET.**
- F. **REPLACE** damaged charger cords or plugs immediately, prior to use.
- G. **REMOVE **iBELT b** FROM POWER SOURCE PRIOR TO ATTEMPTING ANY ROUTINE CLEANING OR MAINTENANCE.** **DO NOT** try to repair the unit or charger yourself. Take it to a qualified **iBELT b** service facility.
- H. **DO NOT INCINERATE THE BATTERY, EVEN IF IT IS SEVERLY DAMAGED OR COMPLETELY WORN OUT.** The batteries can explode in a fire. Handle the battery stick carefully and never attempt to short circuit.
- I. **A SMALL LEAKAGE OR LIQUID FROM THE BATTERY CELLS MAY OCCUR UNDER EXTREME USAGE OR TEMPERATURE CONDITIONS.** This does not necessarily indicate a failure. However, if the outer case seal is broken and the leakage gets on your skin:
 - 1- Wash promptly with soap and water.
 - 2- Neutralize with a mild acid, such as lemon juice or vinegar.
 - 3- If battery liquid gets into your eyes, flush them clear with water for a minimum of 10 minutes and seek immediate medical attention. (Medical note: The liquid is a 25-30% solution of potassium hydroxide.)

J. Use of this product for other than a lighting device is not recommended.

K. Always observe battery polarity. A reversed battery will damage the **IBELC** when charging is attempted. Never attempt to charge any batteries other than the nickel cadmium type battery that is **IBELC** original equipment. Recharging of any other type of batteries will damage the light.

L. If you do not use the flashlight for longer periods, (three month or more) remove the battery to avoid chemical damage (acid leak).

M. Constant contact with sunlight, water chemicals, gases, etc., may cause color fading and may eventually damage the protective finish on the external case components.

N. Never attempt to touch the lamp before a two minutes cooling time from its last 'on' time. Serious burns may result.

BATTERY PACK – Once in every three months, remove the battery pack from the flashlight and visually inspect for signs of gas or chemical leakage. If any signs are observed the battery pack should be removed from service to prevent chemical damage to the inside of the flashlight.

CONNECTIONS – The non-anodized metal groove between the tail cap and barrel must be cleaned periodically to ensure a good electrical contact. Keep the tail cap spring also clean.

O-RING'S GROOVE THREADS – To keep 'O'ring's from drying out and the Threads operating smoothly, apply clean petroleum jelly to the surfaces two or three times a year.

Operating Instructions

1. Mounting the charger

The **IBELC** recharging flashlight system should never be mounted against any vinyl or heat sensitive surface, while charging. AC and DC power cords are available. To charge the flashlight, switch off and Insert the charge plug firmly into the flashlight receptacle. Connect the charger to an appropriate power source.

2.AC Charging Adaptor

Connect the adaptor cord to the flashlight charging receptacle, only with the AC power source in the 'off' position. Otherwise, it may result in the damage of the recharging system. See Specifications for details regarding charging time.

3.Installing the DC option

The DC Adaptor is offered as an option for those who would like to mount **IBELL** Rechargeable Flashlight system in their vehicle.

When installing or using the **IBELL** flashlight in a vehicle, always be sure that the flashlight case dose not touch the chassis. This can result in damage to the flashlight.

Plug the DC power cord's adaptor into the cigarette lighter receptacle of the vehicle. Do not leave adaptor plugged in for any extended period while the engine is 'off' to avoid draining battery.

4.Battery installation

Unscrew the tail cap and insert the battery pack into the barrel. The positive end (+) with a button, goes into the barrel first. Now replace the tail cap and make sure it is tight.

To avoid any operation problems during shipping, it has been packaged in an UNCHARGED state. In order to attain optimum operating time, the flashlight should be charged 10 hours before use.

5.Focusing

FOCUSING – Rotate the face cap of the flashlight to obtain the best spot pattern and beam focus.

6. Charging

Ensure to fully charge the battery pack before use. Several charge/discharge cycles are required to achieve full battery capacity. The **iBELT** is protected against overcharging. See Care and use of Nickel Cadmium Batteries for additional battery information

To charge the **iBELT**, switch off and insert the charge plug firmly into the flashlight receptacle. Connect the charger with the power source. Charge time defers depending on model of flashlight, See Specifications.

With the proper lamp installed, the **iBELT** should run at least one hour after full charge. Operating time varies depending on model of the flashlight. See Specifications.

NOTE: Leaving the flashlight 'on', once the lamp has become dim, can damage the battery.

Care and use of Nickel-Cadmium Batteries

- 1- Thoroughly read the section in this manual concerning safety measures and charging the **iBELT**
- 2- Fully charge before first use or when the flashlight has not been used for a long period of time.
- 3- Although the **iBELT** is designed to protect overcharging, there are exceptions. If the surrounding temperature is below 10 degree F, continuous charging is not recommended, Additionally, if the light is going to be unused for three months or more, remove from charge.
- 4- There are special considerations to note when using multi-cell rechargeable nickel-cadmium batteries, such as those found in certain **iBELT** flashlights. If a nickel-cadmium battery is subject to repeated and extensive over-deep discharges, such as an aggressive conditioning procedure to eliminate "memory", which runs the battery down completely on a regular basis, it can experience a voltage reversal of one of the five cells. This can cause a build up of pressure inside the cell which could lead to venting of the electrolyte cell damage and early battery failure. In addition, should the pressure relief vent on the top of the battery stick become damaged, this pressure build up could lead to the cell's bursting and possible injury.
- 5- To obtain the safest and longest service from your rechargeable products, we offer the following recommendations:

- a) Do not over discharge nickel-cadmium batteries. Never leave the flashlight 'on' once the lamp becomes dim. Discharging the battery past this point can damage it or shorten its life.
- b) Rechargeable batteries are prone to develop false memories, causing an incomplete charge to be accepted by battery no matter how long it is charge to be accepted by battery no matter how long it is charged. To offset this tendency, it is good practice to completely discharge the battery every 2 to 3 months, thereby erasing its memory and allowing it to accept a full charge.
- c) If the battery is over discharged, there may be a small leakage of alkaline electrolyte from the safety vent area on top of the cell. It appears as a white powdery substance and can affect the integrity of the electrical contact. We recommend that your battery be periodically inspected and the contact area wiped clean should any evidence of electrolyte leakage be present. Use caution when handling a battery that has leaked. The electrolyte is a strong caustic and can burn or irritate the skin and eyes.
- d) While inspecting the battery, take note of the condition of the positive terminal cap cell. The batteries may be subject to vent damage if this cap is dented, Under the above circumstances the battery should be replaced or serviced.
- e) When the light becomes dim, recharge the batteries. If the battery pack is left inside the flashlight uncharged for a longer time, this can reduce the performance of the batteries.

NOTE: The rechargeable battery supplied along with the **iBELL** system is recyclable. Check with your local concerned officials for details in your area for recycling options or proper disposal.

Lamp Replacement

1. Before working on the **iBELL**, Remove the tail cap and battery.

For removing the flat base lamps

2. Unscrew and remove face cap to expose lamp holder.
3. Remove the 'bulb retaining cap' by turning it counterclockwise.
4. Remove the 'bulb and insert the new bulb.
5. Replace the 'bulb retaining cap'.

For removing the Bi-pin lamps

2. Unscrew and remove face cap to locate lamp holder.
3. Hold the lamp firmly with thumb and forefinger.
4. Pull straight up until lamp's pins are clear of the lamp holder.
5. Position the new lamp's pins with the 2 holes in the lamp holder and apply a straight downward pressure.
6. Replace the face cap, battery stick and tail cap.

7. Your **iBELL** should be ready for use.
8. Spare bulb is provided in the tail cap.

With regard to LED

There is no need to replace the light source, thereby reducing or even eliminating ongoing maintenance costs and periodic revamping expenses.

1. When you need to repair the led or to replace the LED, please fetch a right technician to do the job.
2. When you want to replace the LED, you have to choose identical types and sizes of LED.

WARNING: Always use genuine **iBELL** replacement parts. Use of other vendors' replacement parts could affect product performance.

iBELL Warranty

Warranty **iBELL** Sentinel Series Aluminum Rechargeable Flashlights

iBELL does not make any express warranties other than mentioned herein. **iBELL** makes no, and hereby expressly disclaims, any implied warranties, including warranties of merchantability or fitness for a particular purpose, except to the extent that implied warranties may not be disclaimed under applicable law. To the extent any such implied warranties may not be disclaimed under applicable law, the duration of such implied warranties shall be limited to the minimum period required by applicable law. **iBELL** accountability under all warranties, both expressed and implied, shall be limited to the repair, replacement or refund of the purchase price of any products covered by such warranty. **iBELL** shall, under no circumstances, be liable for any other damage, including consequential or incidental damages. Some court of laws may not allow the waiver of or limitations on the scope or duration of implied or expressed warranties or on the exclusion of consequential damages, in which case the above waivers, limitations or exclusion may not apply to you.

LIMITED LIFETIME FLASHLIGHT SYSTEM WARRANTY/six months Battery pack Warranty and One Year Charging Adaptor Warranty.**iBELL** warrants to the original registered owner that this **iBELL** Sentinel series Aircraft Aluminum Rechargeable Flashlight System is free from defects In parts and

workmanship. As to the flashlight and other components of the system, except the rechargeable Nickel-Cadmium battery supplied herewith, Charging Adaptor, 'O'rings and accessories, this warranty lasts for the life of the original registered owner. As to the Nickel-Cadmium battery, this warranty lasts for six months from date of purchase. For the charging Adaptor the warranty lasts for one year from the date of purchase, and for the 'O'ring the warranty last for six months. In any country or jurisdiction where specific limitations are placed on limited lifetime warranties, **iBELLE** will honor a 10-year Limited Warranty. **iBELLE** or an authorized **iBELLE** Warranty Service Center will repair the flashlight or other system component or, at its option, replace a defective flashlight or other system component free of charge. This warranty is in lieu of all other warranties and conditions, express or implied.

Exclusion

EXCLUSION: This warranty does not cover bulb burnout, 'O'ring deterioration, or damage to or failure of the system or any component thereof due to alteration, product misuse, lack of maintenance or leakage of a Nickel-Cadmium battery more than six months after the date of purchase. (Product misuse includes, but is not limited to, installing any non-rechargeable battery or any rechargeable battery pack other than a **iBELLE** battery pack or its technical equivalent, using the product for other than its normal purposes). Repairs performed by non- authorized service workshops will invalidate the warranty. Repair or replacement under the terms of this warranty may be fulfilled with functionally equivalent reconditional units, Replaced faulty parts or components will become the property of **iBELLE** .

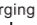
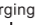
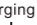
IMPORTANT – Be sure to use genuine **iBELLE** replacement parts.

PRODUCT USE: The **iBELLE** Sentinel series rechargeable flashlights are intended for use as high intensity, heavy duty, rechargeable, portable light sources. Use of the **iBELLE** for any purpose other than light sources is specifically discouraged by the manufacturer.

Trouble Shooting

- If your light does not work, check that the batteries and bulbs are not worn out. Bulbs can be burned out with no obvious signs of damage. Make sure that the tail cap is tight; if not, electrical contact with the circuit in the barrel would not be properly made. Check if battery is installed with (+) positive toward head of flashlight.
- The flashlight does not attain the full operating time even after charging for the specified time.
- Check the line voltage. If the line voltage is less than that is required, the flashlight will require more charging time in order to complete the charging cycle.

(a) Is the flashlight protected against over charging?

Yes. Your **iBELL ** charging adaptor is specially designed to protect against overcharging. Please ensure to use only the **iBELL ** charging adaptor supplied along with the flashlight. Using other adaptors for charging adaptor supplied along with the flashlight. Using other adaptors for charging the **iBELL ** flashlight will result in overcharging of the battery pack and will reduce the life span of the battery pack.

(b) What is meant by battery memory?

A Nickel Cadmium rechargeable battery remembers each length of discharge and after a period of time, retains it, causing the battery to accept less than a full charge. This is why it is critical to 'recondition' the battery periodically.

(c) How long can I leave the flashlight in the recharger (on charge) without using?

When not in use, it is good practice to disconnect the unit's power plug. Self-discharge would be less than 1% per day

(d) Is it advisable to leave the battery uncharged for a long duration?

When the light becomes dim, recharge the batteries, If left uncharged for a long period of time, this can reduce the performance of the batteries.

(e) The operating time of the flashlight is diminishing on a regular basis.

Check line voltage. If the line Voltage is as per specifications, the loss in the operating time may be due to unlikely development of false memory of the battery pack. Please discharge the battery pack and completely recharge. This will help to erase the false memory and to recharge the battery pack to its full capacity.

(f) What is meant by battery memory?

A nickel Cadmium rechargeable battery remembers each length of discharge and after a period of time, retains it, causing the battery to accept less than full charge. This is why it critical to 'recondition' the battery periodically.

(g) Will my battery build a memory?

If the light is totally discharge several, 5 to 6, times per year, there is very minimal chance of the battery building up a memory.

(h) How can I clean the dust inside the reflector?

Use a small brush or blow with dry air.

(i) How can I remove a fingerprint from the reflector?

Use a camera lens cleaner. Use a cotton swab and rub gently.

(j) What is meant by a limited Life Time Warranty?

This means that the complete system is guaranteed but for some items the warranty terms vary from the others. In the case of **IBELLS** Sentinel series Aircraft Aluminum Rechargeable flashlights, the warranty is as follows.

Flashlight casing – entire life term of the original registered owner

Switch – one year from date of purchase

Recharging module located within the flashlight – one year from date of purchase

Recharging adaptor – 1 year from the date of purchase

Battery Pack-6 months from the date of purchase/1000 charging cycles whichever comes first.

Reflector – One year from the date of purchase

Lens – One year from the date of purchase

'O' Ring -6 months from the date of purchase

Tail cap spring-Entire life term of the registered owner

Lamps- No warranty

(k) Can I use my **IBELT** rechargeable Aircraft Aluminum flashlight as a diving light?

We do not recommend it. While rain, dropping in puddles, and other kinds of typical terrestrial events would not get moisture past the **IBELT** o-ring seals, it has not been designed for the high pressures which occur in diving environments.



iBELL 
www.ibellsworld.com